



for the  
**CURATED  
LIVING**



**PRELAM BOARDS**

COLLECTION 2023-25

Step into the world  
of highly efficient  
Prelam Boards,  
showcasing two  
stunning finishes  
that are sure to  
captivate your  
senses.  
**Live elegant.**

# PRELAM BOARDS



HIGH GLOSS

SUPER MATTE

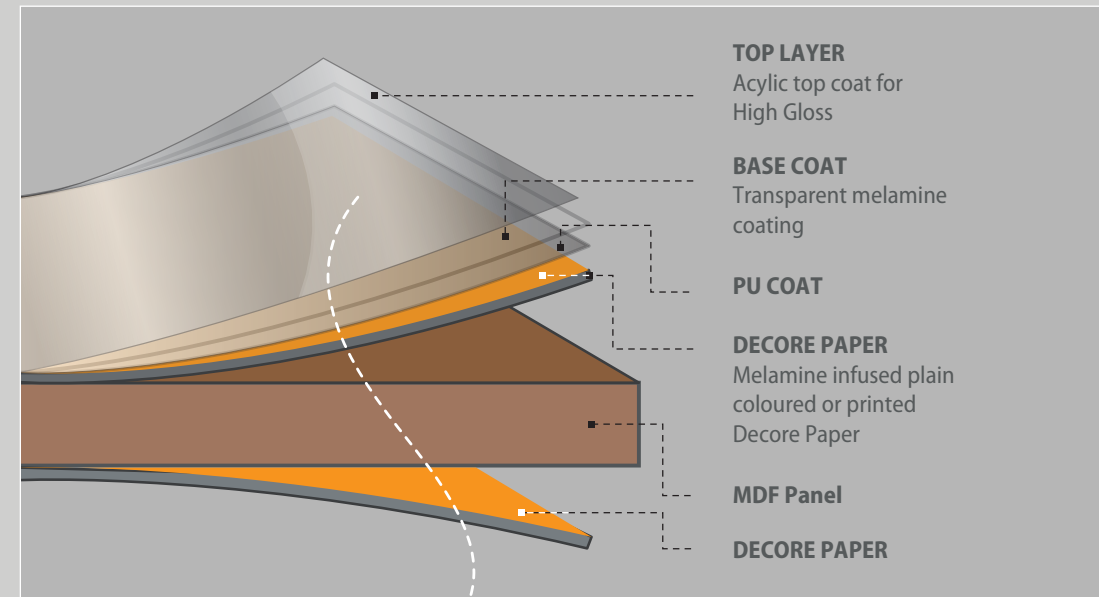
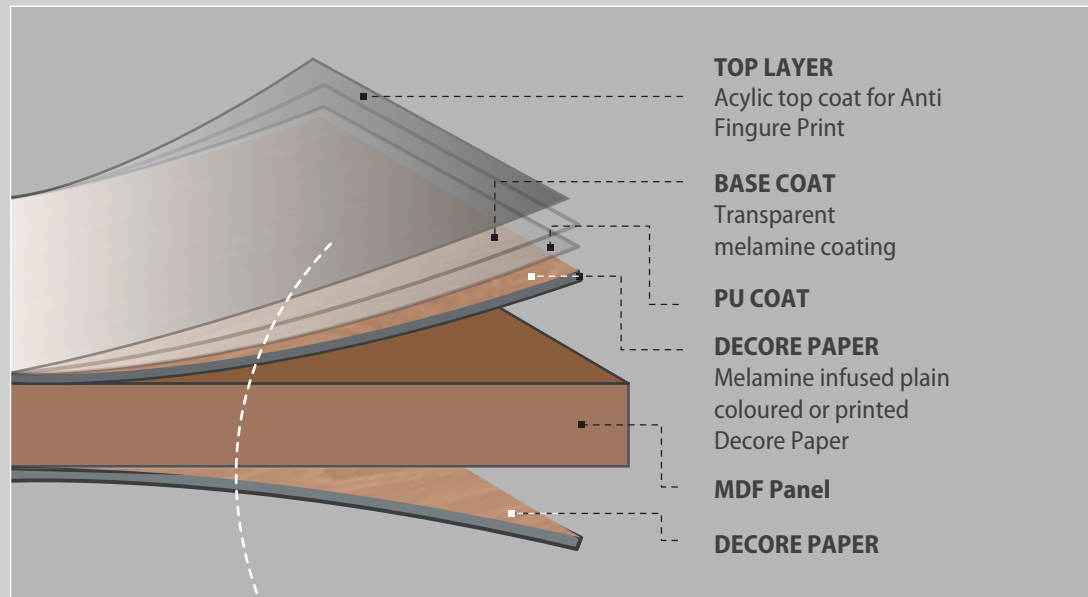


**Super Matt Pre-laminated MDF Boards**  
 A finish with a beautiful matt texture that cannot settle down any fingerprint marks and scratches. Stylam introducing a super matt and abrasion resistance solution crafted with one of the most advance State-Of-Art BARBERAN'S Machine + Cutting Edge German KLEIBERIT hot coating technology.



**High Gloss Prelam Boards**  
 Scratch-proof shiny surfaces aren't a fiction anymore. Stylam is the first company in India a introduce revolutionary KLEBERIT HotCoating technology to produce the high gloss boards with high abrasion resistance and durability to the prelam board surface thereby maintaining the gloss level three times longer than the ordinary.





Cutting Edge German KLEIBERIT hot coating technology that gives

**FEATHER-LIKE touch**  
**SUPER MATTE finish**

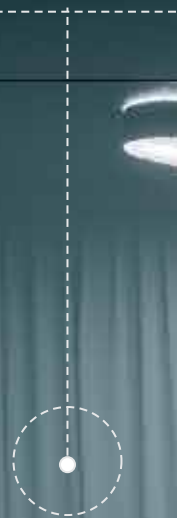
**GLASS-LIKE touch**  
**ULTRA SHINY finish**





*...the soleful* **SOLIDS**

1713 GL  
ANTHRACITE GREY



1754 GL / VERDE GREEN

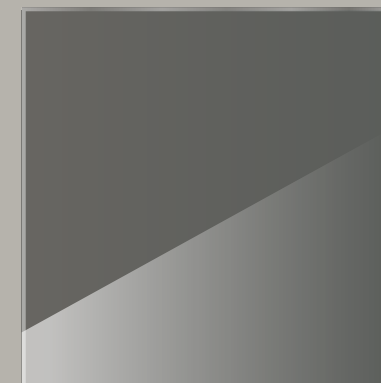


**8001 GL**  
FORMIC WHITE

**1713 GL**  
ANTHRACITE GREY

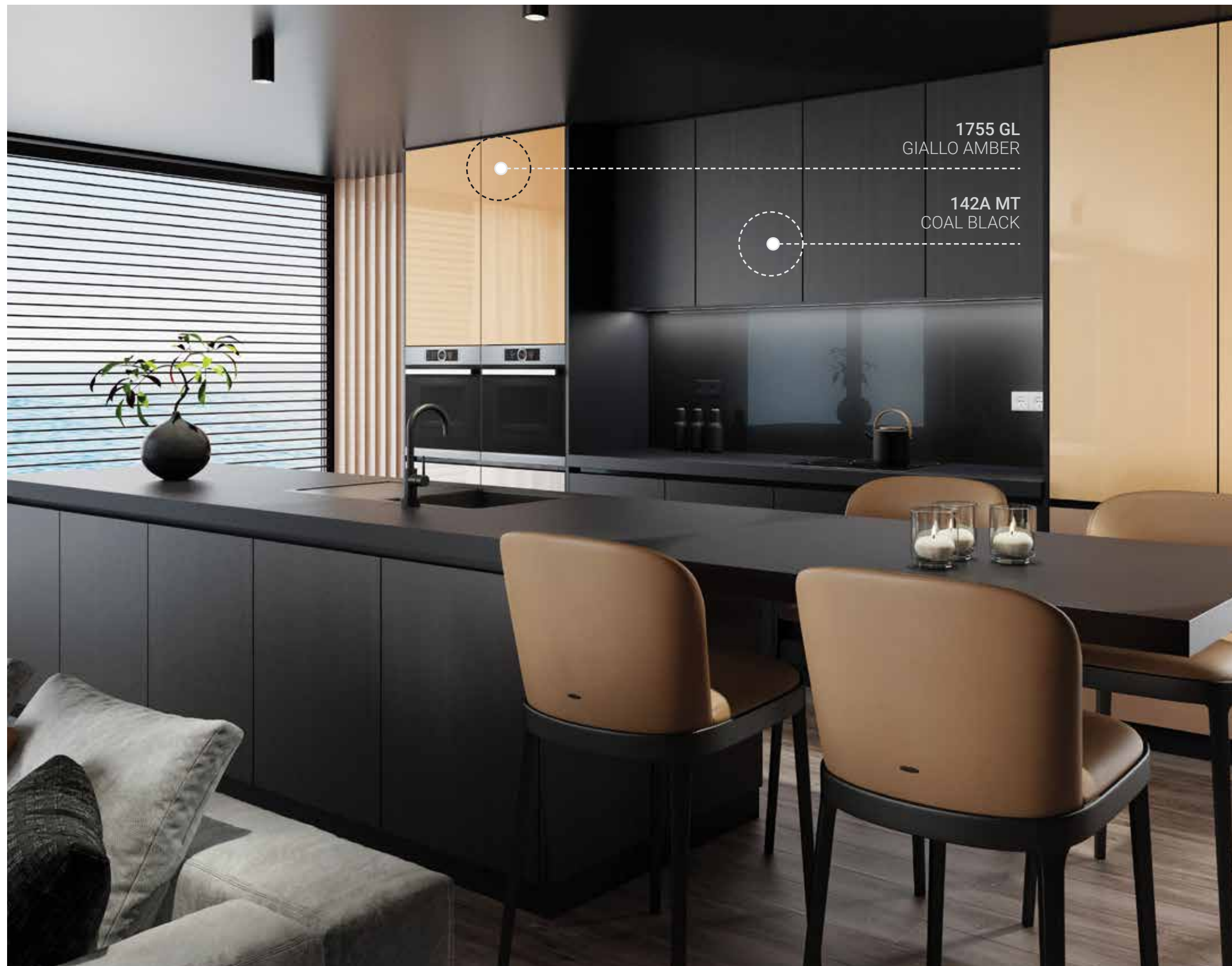


**8001 GL** FORMIC WHITE



**1713 GL** ANTHRACITE GREY





1755 GL  
GIALLO AMBER

142A MT  
COAL BLACK



1755 GL GIALLO AMBER



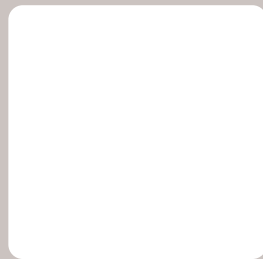
142A MT COAL BLACK



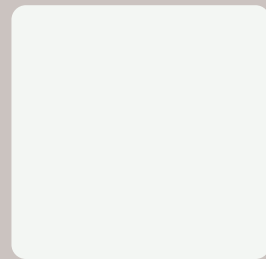
*at a glance...* **SOLIDS**

SUPER MATTE

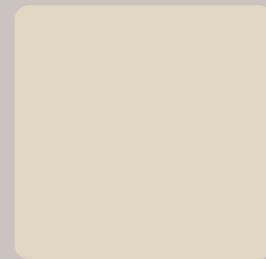
HIGH GLOSS



8001 PURE WHITE



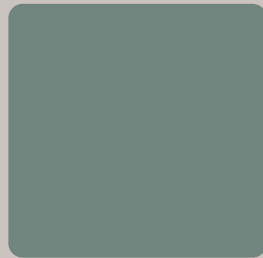
8001 FORMIC WHITE



1757 ALMOND



1755 GIALLO AMBER



1724 VIRDIAN GREEN



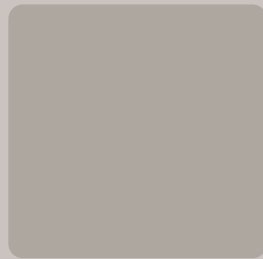
1754 VERDE GREEN



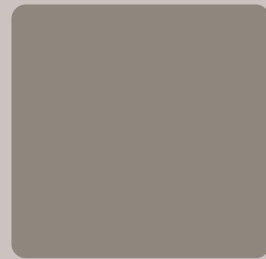
1722 PREMIUM GREEN



1725 DEEP TURQUOISE



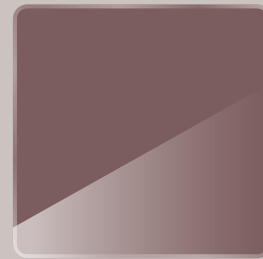
1715 BEIGE ARIZONA



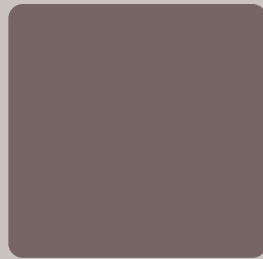
1723 CASTORO BEIGE



1753 ROSSO CHERRY



1721 ROSSO JAIPUR



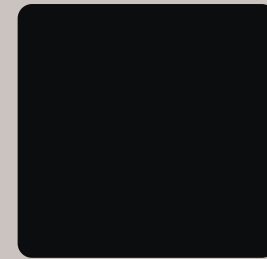
1719 RED BROWN



1713 ANTHRACITE GREY

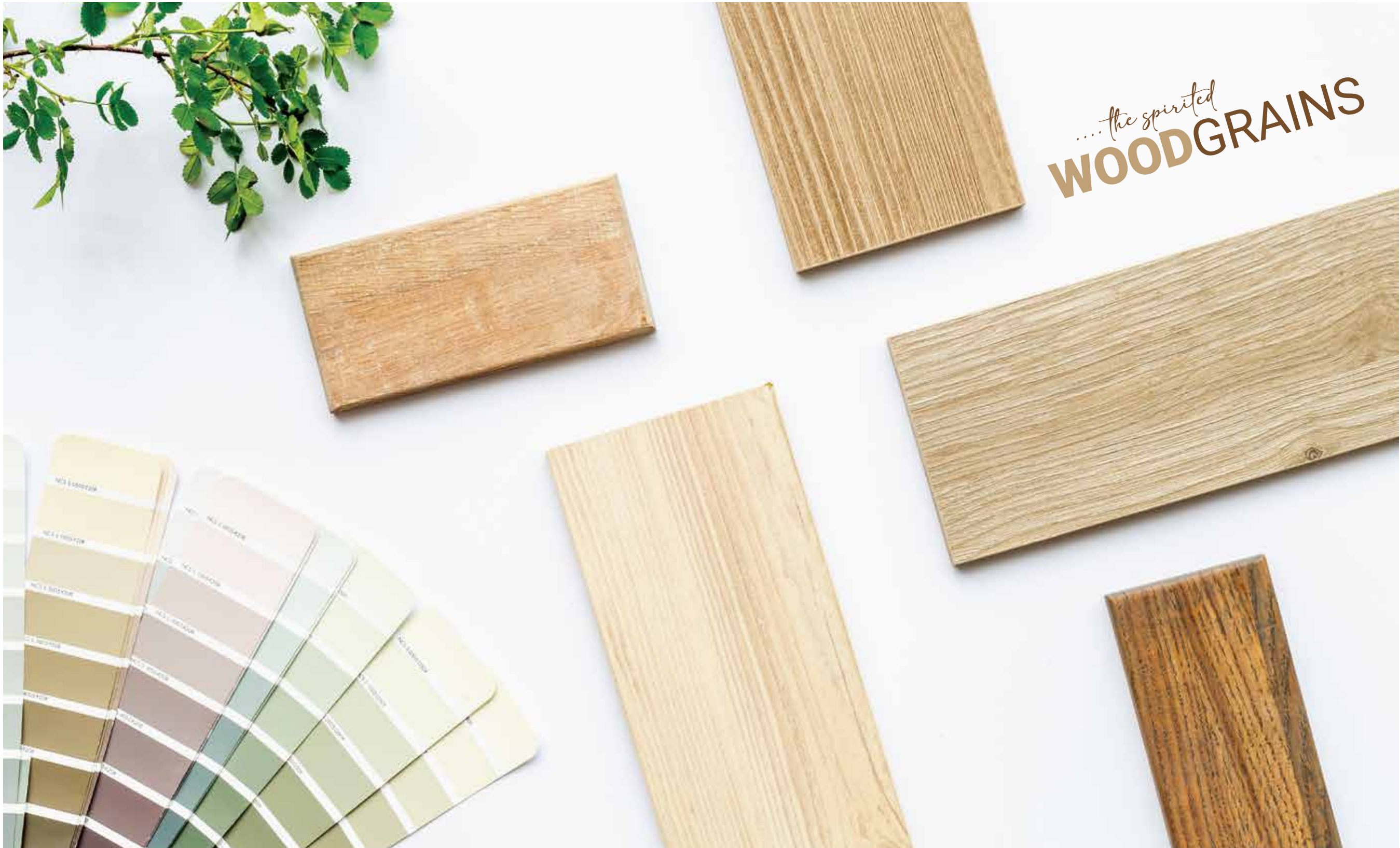


1720 COCAO ONIRICO



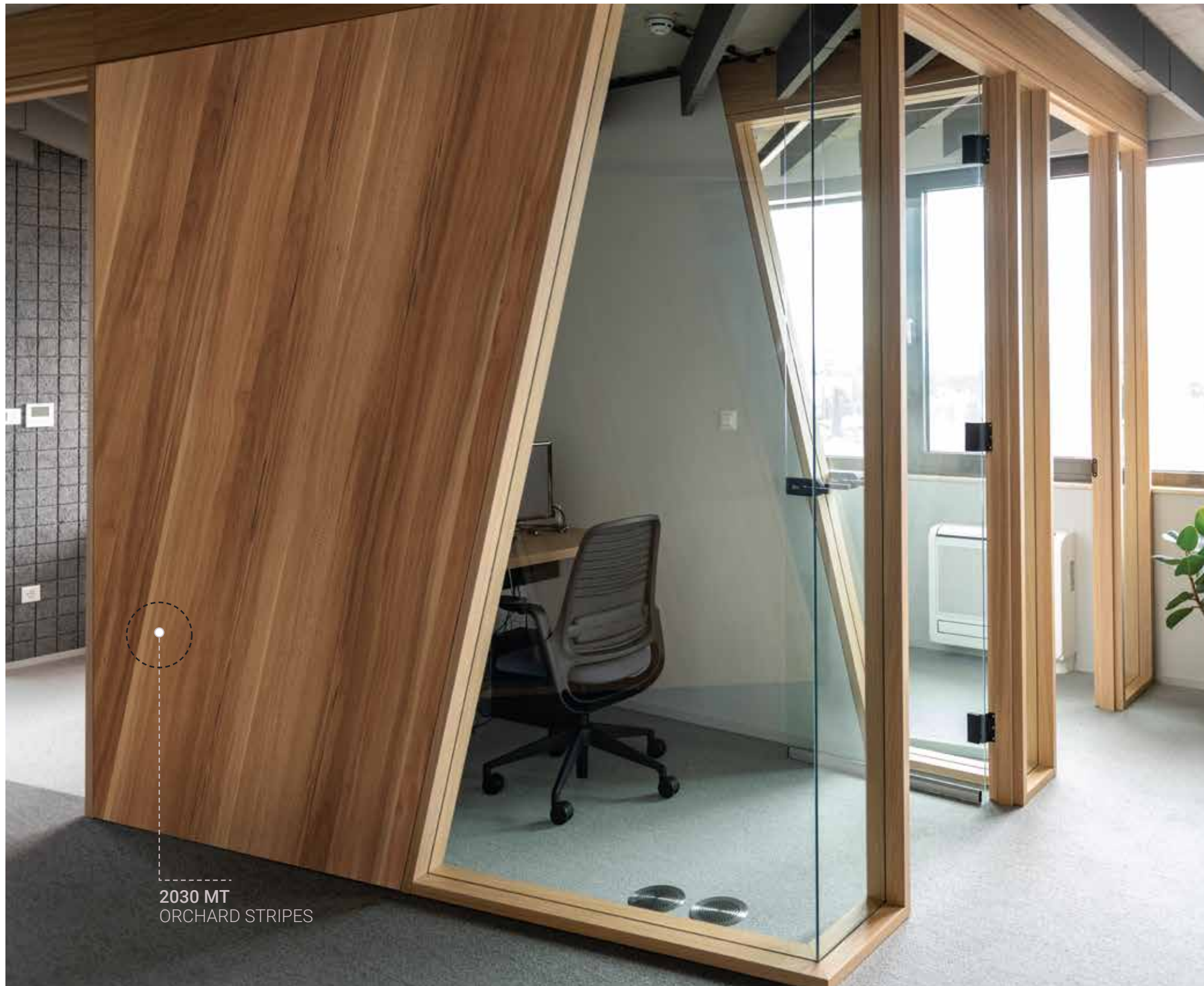
142A COAL BLACK





...the spirited  
**WOODGRAINS**





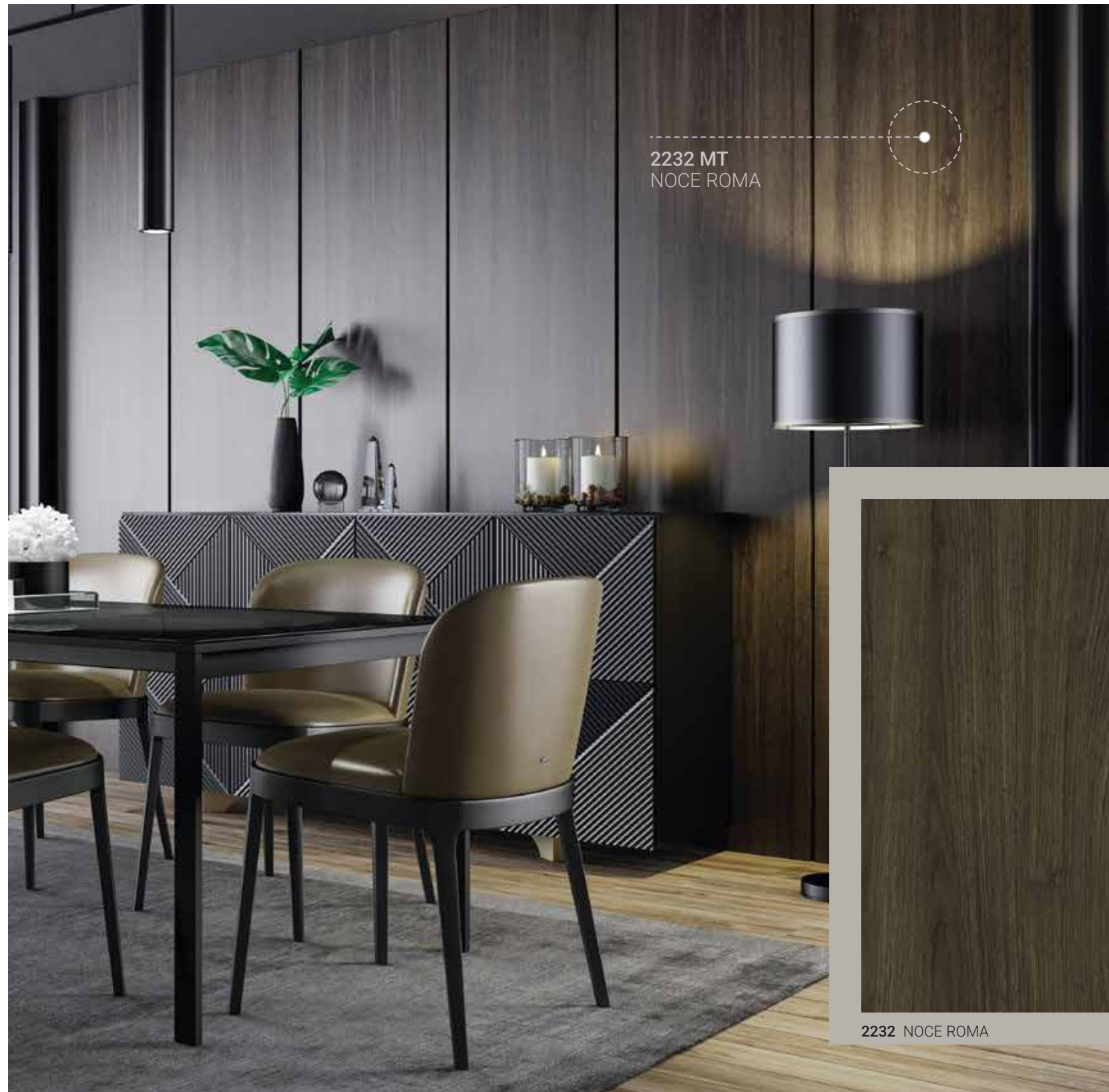
2030 MT  
ORCHARD STRIPES



7714 FUAGWA



2030 ORCHARD STRIPES



2232 MT  
NOCE ROMA



7812 MAKASAR



7807 NAKED WOOD



2232 NOCE ROMA



7719 TARRAGONA WALNUT





2232 MT  
NOCE ROMA



1992 OAK CHAMONY



7105 SHINE TEAK



7404 BROWN OAK

# WOOD GRAINS

*at a glance...*

SUPER MATTE

HIGH GLOSS



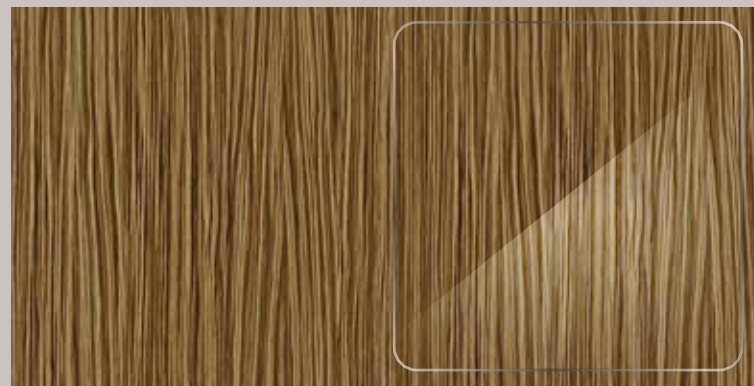
7404 BROWN OAK



7105 SHINE TEAK



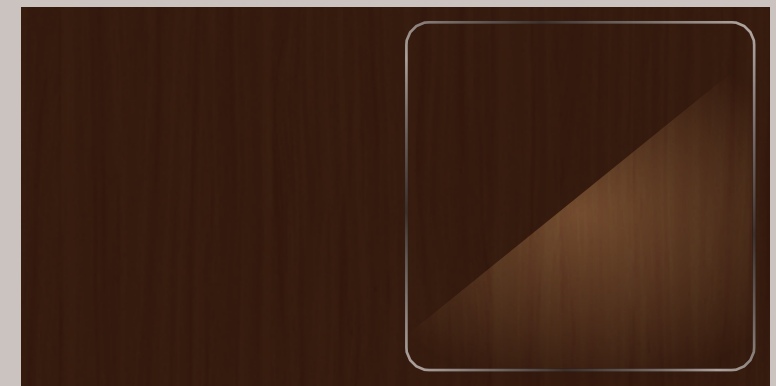
2030 ORCHARD STRIPES



7812 MAKASAR



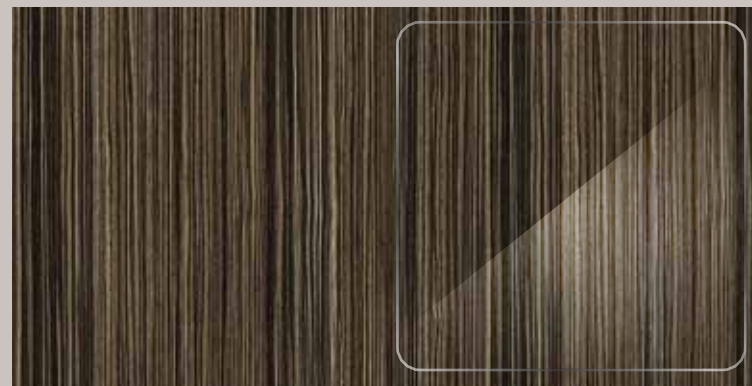
7714 FUAGWA



1992 OAK CHAMONY



7719 TARRAGONA WALNUT



7807 NAKED WOOD



2232 NOCE ROMA



## TECHNICAL DATA SHEETS

### HIGH GLOSS PRELAM BOARDS

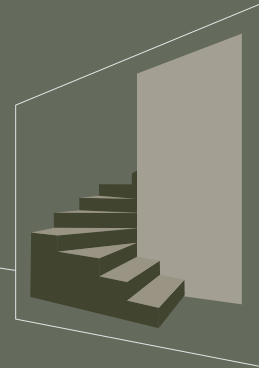
| Sr. No.  | PROPERTIES                            | TEST METHOD             | STYLAM TYPICAL VALUES                                   |
|----------|---------------------------------------|-------------------------|---|
| <b>1</b> | <b>GENERAL PROPERTIES</b>             |                         |   |
| 1.1      | Dimension Tolerance                   | EN 324-1/EN 622-1       | +/- 2 mm  |
| 1.2      | Thickness Tolerance                   | EN 324-1/EN 622-1       | +/- 0.3 mm  |
| 1.3      | Bow Tolerance                         | EN 438-4                | 2 mm/mtr <sup>a</sup>                                   |
| <b>2</b> | <b>PHYSICAL PROPERTIES</b>            |                         |   |
| 2.1      | Gloss Level                           | DIN 67530               | > 90 GU @ 60°   |
| 2.2      | DOI Value                             | RHO Point meter         | ≥ 90  |
| 2.3      | RIQ Value                             | RHO Point meter         | ≥ 85  |
| 2.4      | Haze Value                            | Haze meter              | ≤ 2.5   |
| 2.5      | Scratch Resistance (Pencil Hardness)  | ASTM D 3363             | > 2 H <sup>b</sup>                                      |
| 2.6      | Micro Scratch Resistance (Martindale) | EN 438-2 2016 Clause-30 | Loss of gloss @60° < 10%                                |
| 2.7      | Abrasion Resistance                   | DIN 68861 T2            | > 400 rev.  |
| 2.8      | Adhesion (Cross Cut)                  | IHD-W-464               | Gk1   |
| 2.9      | Adhesion (Adhesive Tape)              | IHD-W-463               | 0 (16h, 7d and 21d)                                     |
| 2.10     | Light Fastness                        | EN 14243 Blue scale     | 6   |
| 2.11     | Resistance to Steam                   | EN 14323                | 4   |
| 2.12     | Cold Check                            | Cold Check Test         | No Damage (40 cycles)                                   |
| 2.13     | Density                               | EN 323                  | 725 - 800 kg/m <sup>3</sup>                             |
| 2.14     | Formaldehyde Content                  | EN 622-1                | Class E1/CARB <sup>c</sup>                              |
| 2.15     | Anti-Bacteria Property                | JIS Z 2801: 2010        | Antimicrobial value of evaluation, R ≥ 2.0 <sup>d</sup> |

### ANTIFINGER PRINT PRELAM BOARDS

| Sr. No.  | PROPERTIES                 | TEST METHOD         | STYLAM TYPICAL VALUES                                   |
|----------|----------------------------|---------------------|---|
| <b>1</b> | <b>GENERAL PROPERTIES</b>  |                     |   |
| 1.1      | Dimension Tolerance        | EN 324-1/EN 622-1   | +/- 2 mm  |
| 1.2      | Thickness Tolerance        | EN 324-1/EN 622-1   | +/- 0.3 mm  |
| 1.3      | Bow Tolerance              | EN 438-4            | 2 mm/mtr <sup>a</sup>                                   |
| <b>2</b> | <b>PHYSICAL PROPERTIES</b> |                     |   |
| 2.1      | Gloss Level                | DIN 67530           | ≤ 4 GU @ 60°  |
| 2.2      | Scratch Resistance         | EN 438-2            | 1.8 - 2 N <sup>b</sup>                                  |
| 2.3      | Abrasion Resistance        | DIN 68861 T2        | > 400 rev.  |
| 2.4      | Adhesion (Cross Cut)       | IHD-W-464           | Gk1   |
| 2.5      | Adhesion (Adhesive Tape)   | IHD-W-463           | 0 (16h, 7d and 21d)                                     |
| 2.6      | Light Fastness             | EN 14243 Blue scale | 6   |
| 2.7      | Resistance to Steam        | EN 14323            | 4   |
| 2.8      | Cold Check                 | Cold Check Test     | No Damage (40 cycles)                                   |
| 2.9      | Formaldehyde Content       | EN 622-1            | Class E1/CARB <sup>c</sup>                              |
| 2.10     | Density                    | EN 323              | 725 - 800 kg/m <sup>3</sup>                             |
| 2.11     | Anti-bacteria property     | JIS Z 2801: 2010    | Antimicrobial value of evaluation, R ≥ 2.0 <sup>d</sup> |

**FULL SHEET DIMENSIONS: 1220 X 2440 mm**  
**THICKNESS: 12 mm /25 mm**






CORPORATE OFFICE

SCO 14, Sec 7C, Madhya Marg,  
Chandigarh (UT) - 160019, India

 @stylamlaminates

 @stylamindustries

 @stylamindustriesltd

 stylamlaminate

[www.stylam.com](http://www.stylam.com)