



SCO 14, Sector 7- C,
Madhya Marg,
Chandigarh (UT) INDIA - 160 019
T: +91-172-5021555, +91-172-5021666
E: info@stylam.com
www.stylam.com

Onwards.
And Upwards. 



CELEBRATING
32
YEARS

Leading by
example,
Stylam
completes
32 years of
moving
forward.

32 Years of

Making it possible.
Committing to quality.
Taking challenges head on.
Fulfilling promises.
Setting new benchmarks.
Never looking back.
Moving forward.

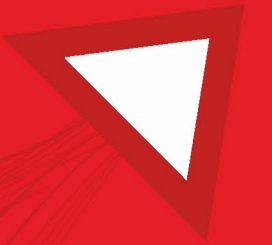
**Stylam is proud
to have
completed
32 glorious years.**

And counting.

CELEBRATING



YEARS





the small
step. for all
things big.

The Corporate Profile

The journey has been an interesting one.

For years, we have been playing our role in the changing landscape of the building materials. We have been through all four seasons, 32 times to be precise. And today, where we stand, we witness a history to remember and a future to explore. It was the year 1991, when the idea of making the world of interiors beautiful was conceived. Golden Laminates Ltd. commenced its journey as a Luxury Decorative Laminated Sheet manufacturer for both residential and industrial applications. Within a few years, we were Stylam Industries, and the brand emerged progressively as the manufacturer of some of the most advanced interior and exterior designing products including the range of Laminates, PreLam Boards, Exterior Cladding and Acrylic Solid Surface, to name a few.

At Stylam, quality and innovation have always been at the helm. Adherence to global standards has been a philosophy rather than a need. And we have embraced change in all forms, constantly developing new home décor designs complying with modern international trends.



Vision

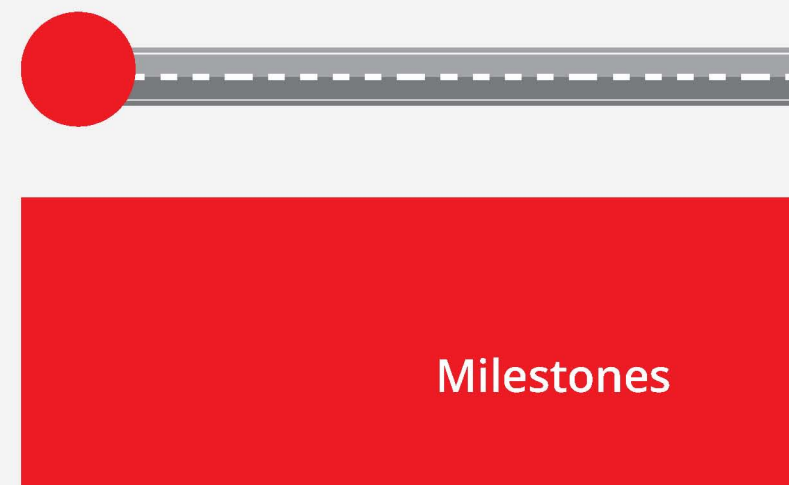
To be a Global Entity in every arena of our work by delivering value-based solutions.



Mission

We are a global family with proud Indian heritage committed to provide innovative building material solutions around the world.

through the years. clicking it right.



Golden Laminates
Limited starts
operation as Private
Limited Company.

1991

Within four years
listed in Bombay
Stock Exchange

1995

1996

Recognized as an
'Export House' by
the Government of
India

2001

Expanded into a
global entity

2010

Named
Stylam Industries
Limited

2012

First ever Indian
manufacturing
company to introduce
HPL Exterior Cladding
with brand name
'Fascia'

2013

Introduces it's
premium sub
brand 'VIOLAM'

2017

Stylam
launched range
of Restroom
Cubicles &
Lockers

2019

Introduced world's
first Hot Coating
Press Machine

2018

Introduced and
added new product
line of Acrylic Solid
Surfaces (India's
first manufacturer)

2020

Stylam introduced
Short Cycle Press
Technique for
making PreLam
Board in both Anti
Finger Print and High
Gloss finishes.

2021

Focused on overall
Design, Development
and introduction of
new innovative
product ranges for the
building material
industry



in the right
direction. **on**
the right track.

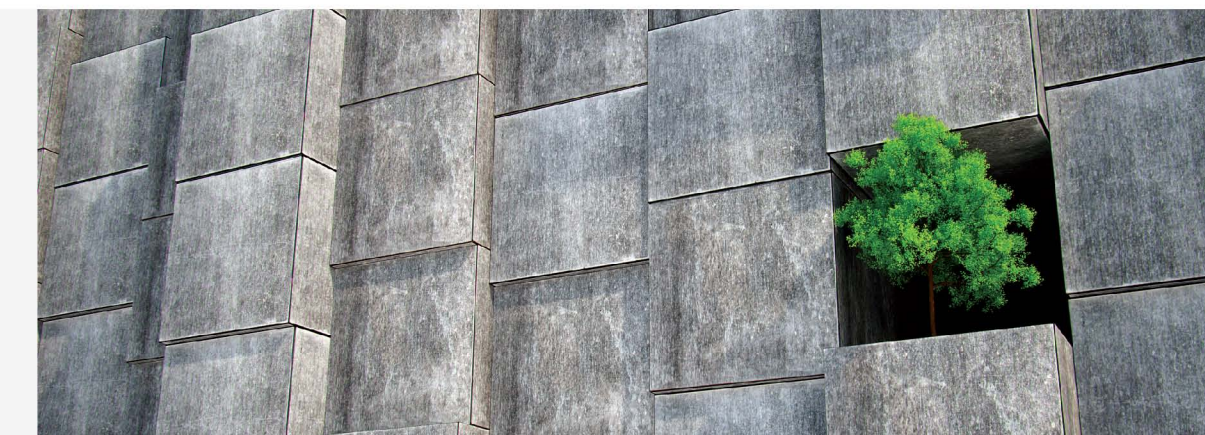
Strengths

Having a Global presence in more than **80+ Countries.**

Over **1500+ Designs, 150+ Textures** & Finishes.

State of the art technology for manufacturing 100% Acrylic Solid Surface.

Having a range of High-Pressure Laminates, Cubicles Board, HPL Exterior Cladding, Acrylic Solid Surface.
Having multiple surfaces available in High Gloss,



Metallic, Anti-bacterial, Chalkboard, FR, Electrostatic, Magnetic, Mirror, Chemical Retardant, etc.

Credibility of over 3 decades in the Industry.

Stylam Laminates with **uniform and superior sanding** ensure the best bonding with substrates.

Asia's biggest Infrastructure & manufacturing plant of Laminates.

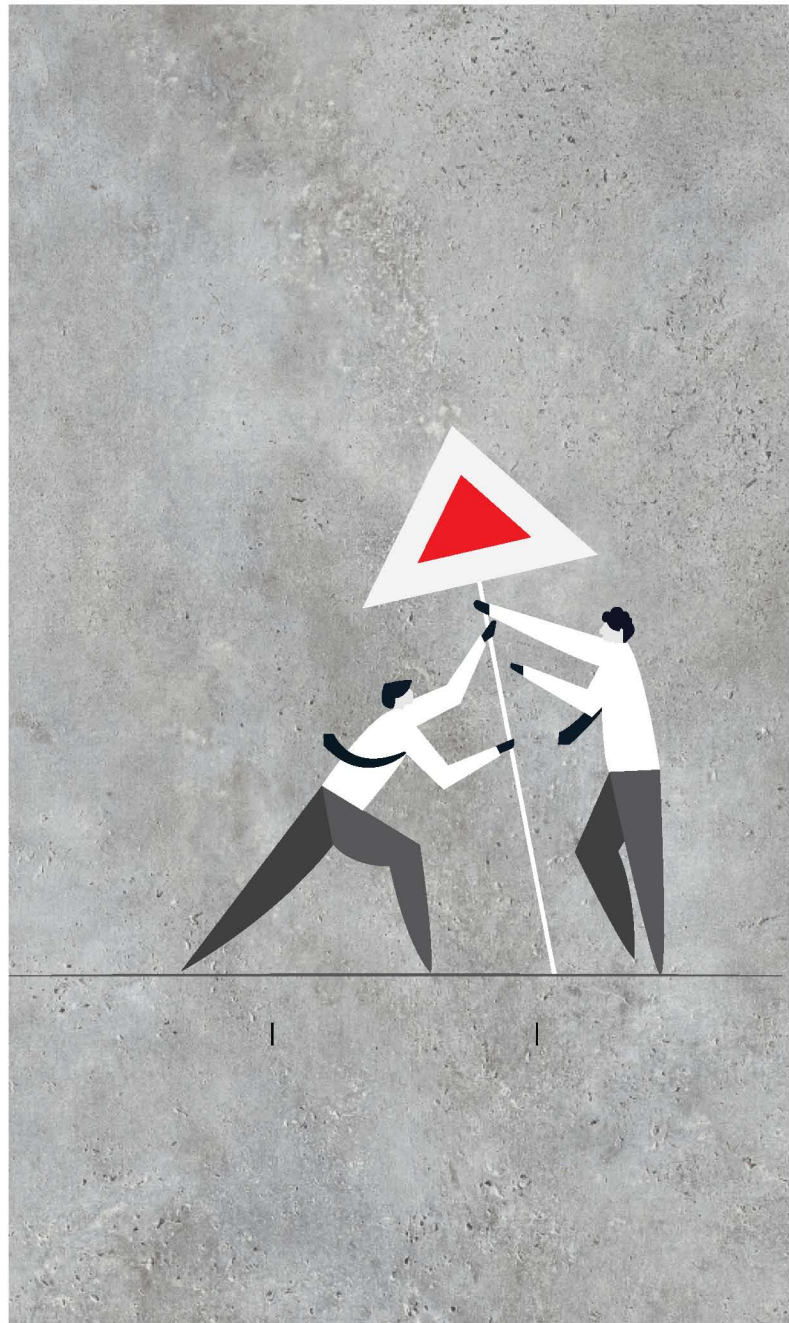
Largest capacity of Hydraulic Press in India having 28 daylight openings in 1220 x 2440 mm size

Largest capacity of Hydraulic Press in India in other following sizes: 1300 x 2800 mm, 1300 x 3050 mm, 1860 x 3660 mm, 1860 x 4320 mm

Largest Laminate producing group in India with a **production capacity of over 1.5 million laminates per month.**

First ever in India Hot Coating process machine for HPL to produce top quality High Gloss & Anti Finger Print laminates in wide ranges.

Having Pan India channel partner network.



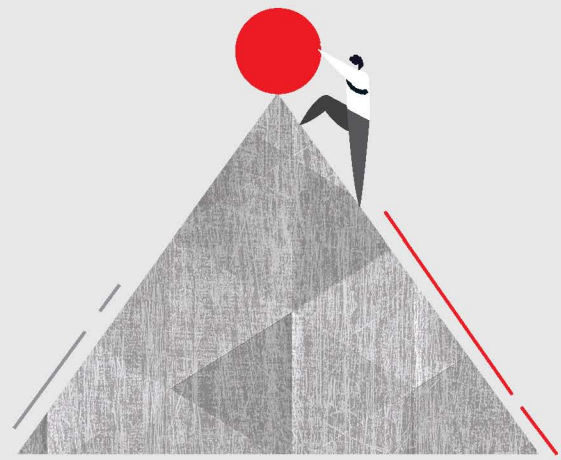
we keep going. we keep winning.

Awards and Recognition

In 32 years, we have achieved what only a few dream of. Truth is, we just keep on going, with what we have decided. And then everything else... just follows. The ISO 9001:2015 certification is a hallmark of integrity, quality and reliability. The design and efficiency of the laminates have earned us the CE marking certification. **Stylam takes pride in being recognized as an Export House by the Government of India.** We meet all Quality, Safety as well as Green Standards and operate as responsible corporate citizens.

We have been known to manufacture zero defects products and ensure that it has successfully accredited various international quality certifications like CE, ISO 9001, ISI and environment & health related certifications like FSC, NSF, Greenguard, Singapore Green label, M1, ISO 14001 and ISO 45001 to name a few.





building
on strengths.
to build a
reputation.

••09 STYLAM



Infrastructure

What makes Stylam count in the national and international market is actually the innumerable desire to set new benchmarks in each of its facilities. The company has a world-class infrastructure with a capacity to manufacture large quantities of various surface solutions for building material industry. The latest machines and equipment make the single plant location, one of the most dynamic laminates producing units in the country!

And to no one's surprise, the plant is soon going to be the **largest laminate manufacturing plant in Asia**. An incredible feat! The imported moulds of various finishes from France and Germany, and Italian IMEAS Machine for back sanding are just a few installations that make Stylam's manufacturing units advanced.

••10 CORPORATE PROFILE

Capability

We are capable of producing laminates in wide range of sizes:

1220 x 2440 mm
1245 x 2465 mm
1300 x 2800 mm
1300 x 3050 mm
1860 x 3660 mm
1860 x 4320 mm
1600 x 3660 mm
1600 x 4320 mm

The sheet thickness ranging from 0.5 mm to 30 mm in different finishes such as gloss, matt, suede, texture and more. Currently, we have more than 1200+ unique Laminates designs in various textures, and we keep on adding to the tally with time.

We produce the Anti-finger Print and High Gloss laminate sheets in 1 mm and above thickness while the PreLam Boards in the above finishes can be produced in the range of 18 - 25 mm.

Capacity

- Production capacity of Approx. 20 million sheets of laminates annually
- We have the single press with highest capacity of 28 daylights and press with the largest size of 1860x4320 mm
- Production capacity of Hot Coating Press is 1 million sheets per year
- Production capacity Acrylic Soild Surface is 300,000 panels per year



Quality

There is nothing in the name when there is no quality. Apart from believing firmly in customer satisfaction, our own satisfaction is important when it comes to delivering quality. This is the reason that we have in place a quality system that is both rare and effective.

- Raw materials are sourced only from trusted partners.
- The entire batch of the raw material is checked prior to entering the manufacturing unit.
- The production is carried out under extreme supervision.
- Any batch with any shortcoming is replaced with new one.
- A monitoring squad takes care of the production process.
- The final products are manually checked for quality under various parameters.
- The end sheets go under technical check to ensure all is in place.
- The storage department run their own check.
- Packaging is carefully done so that the laminates are ready to be shipped and there is no fear of damage.
- A robust after-sales service department ensures that only the best reaches the doors of the customers!



**only the
best. for
the better.**

••13 STYLAM

The Product Line

And how can we be satisfied when there is so much to innovate, so many designs to explore. Stylam creates some of the most elegant, contemporary, and classic designs in laminates.

Our range of building material products is a fine balance between aesthetics and functionality. This is the reason that the laminates lasts longer and shows a lot of promise under extreme conditions.

The entire Stylam collection intends also intends to assist designers to create contemporary interiors as well exteriors for the existing urban lifestyle and tastes.



High Pressure
Laminates

Speciality
Laminates

Acrylic
Solid Surface

Performance
Laminates

Exclusive Surfaces

Compact
Laminates

PreLam
Boards

**BUILDING
MATERIALS
PRODUCT
PORTFOLIO**



••14 CORPORATE PROFILE



RANGE OF HIGH PRESSURE LAMINATES

- Decorative Laminates
- Unicore Laminates
- Digital Laminates
- Post Forming Laminates
- Electrostatic Laminates
- Magnetic Laminates
- Chalk & Marker Boards
- Synchro Laminates
- Mirror Shield Laminates
- Metallic Laminates
- Flicker Laminates
- Chemical Resistant Laminates
- Fire Retardant Laminates
- Industrial Laminates



A few names stand out in the laminate industry, and Stylam certainly ranks above many. Our decorative laminates have set benchmarks in the past because of their unique design range and consistent quality. Stylam decorative laminates are regarded as the best option for a wide range of applications that include furniture, wooden cladding, lift and door lining, doors, shelves, office partitions, store fittings, and many more. Apart from look and feel, Stylam decorative laminates are designed to resist extreme conditions in terms of temperature, pressure, air and moisture. These are available in a wide range of colours in solids, woodgrains and patterns.



Combined identical colours with core layered decorative surfaces. Tastefully selected decorative papers for surface layers are infused with treated melamine resins. Same decorative papers are used as core layers that are infused with specially treated thermosetting resins. Unicore is a world where you could feel the vibrancy of colours through & through, flaunt your desks, doors, counter-tops, table-tops, drawers, display shelves, shutters and all the furniture with stunning, beautiful & flawless Unicore surface that uniform look all across.



Imagination has no boundaries. But the real art is when you can translate your imagination into something that you can see, touch and feel. This is what sums up the intention of DigiDelight Digital Laminates. With themes ranging from nature, sports, food and romance, you can choose from any category. Now, if you have any particular interior setting, and wish to match the laminates accordingly, Digital Laminates is just the feature that you needed. Come, explore a whole new world of creative and quality laminates.



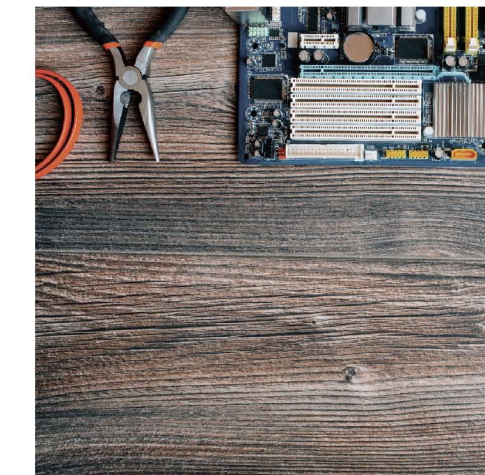
POST FORMING LAMINATES



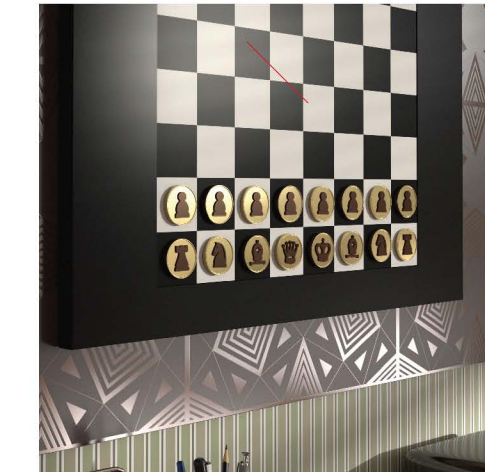
Post Forming Laminate range has been exclusively designed for usage on vertical and horizontal interior surfaces where the laminate is required to roll in a simple radius over the edges of a substrate. With added flexibility, malleability and excellent thermoforming properties for forward and reverse bending applications, Post Forming Laminate enhances the decorative property of the edges of any regular laminate since it gives no seams around corners and a smooth, evenly laminated surface.

ELECTROSTATIC DISSIPATIVE LAMINATES

Stylam Electrostatic Dissipative Laminates (ESD) diffuse static electric charge to minimise electrostatic charge. Stylam ESD laminates have excellent Electro Static Dissipative properties with $1 \times 10^8 \Omega$ point to point resistance and meet all required specifications for electrostatic dissipative properties. ESD laminates are suitable for a wide range of applications in IT offices, Call Centres, Laboratories, Electronic Industries, Pharmaceutical Laboratories etc.



MAGNETIC LAMINATES



Stylam Magnetic Collection is the high-tech hybrid of industrial flair and sophisticated design. Magnetic Laminates have a strong magnetic effect and can be written on with board non-permanent markers ideal for a wide variety of applications in environments such as retail, education, commercial and residential. Magnetic Laminate is a special type of Laminate that can use a magnet to stick the paper or picture directly to the laminate.

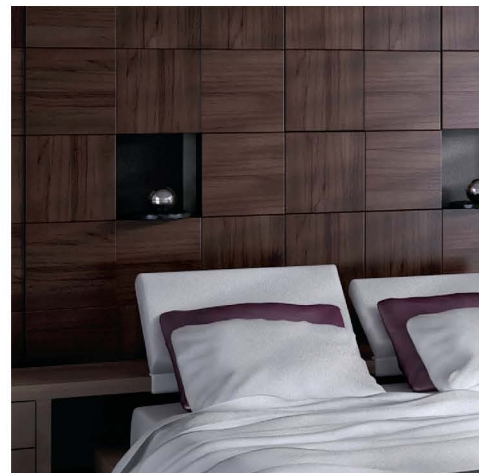
CHALK & MARKER BOARDS

Chalk & Marker Grade Laminate Boards used to manufacture the Chalk and Marker Boards for smooth writing at schools, colleges, offices, restaurants, notice boards, etc. The laminate sheets are pressed over craft paper core panels with melamine resins to provide a smooth and durable writing panel for commercial and residential applications. These laminates turn into spotless surfaces with a single wipe, leaving no ghost effect.



SYNCHRO LAMINATES

Stylam Synchro laminate has the feel and looks of solid wood and veneer. Stylam range is designed carefully and especially for designers, architects and proud house owners to give interiors a feel that looks natural. These Perfectionist laminates connect with people who love perfection, symmetry & synchronization. These laminates are specially crafted with embossed surfaces that simulate the real wood grain design in a highly sensible manner. The premium press plates are able to match the textures with patterns of each individual laminates along as great and perfect precision. These laminates are easy to clean, scratch-free and stain-resistant and come in many colours, textures, and patterns.



MIRROR SHIELD LAMINATES



Stylam mirror laminates are manufactured using real aluminium, stainless steel and copper foils bonded to a backing of phenolic, resin-impregnated kraft paper giving a durable, semi-rigid sheet for easy fabrication and handling. MirrorShield maintains its integrity for long, even in high traffic and activity such as gymnasiums, nightclubs and schools. These laminates are crafted with HPHT technology in which several layers of resin-impregnated kraft papers and special mirror foil paper and a clear overlay. Results in strong, durable, and high-quality products in a range of tones, also open ups your residential or commercial projects to more light.

CHEMICAL RESISTANT LAMINATES



A combination of style and durability, a chemical resistant laminate is perfect for areas of high-volume usage of chemicals and harsh solutions. Engineered with HPHT technology, results provide chemical-resistant plus anti-soiling, anti-bacterial, anti-fungal and easy to clean surfaces.



INDUSTRIAL LAMINATES

The structural composite materials that are produced by impregnated fibrous webs of material with thermosetting resin, then fusing multiple layers together under high temperature and pressure having stable geometry in high temperatures and minimal deformation when subjected to loads. In addition, they have a high strength-to-weight ratio.

FIRE RETARDANT LAMINATES



Designed to perform in even the most demanding environments, Fire retardant laminates are superior resistant to flame propagation. Engineered with melamine resin, special decorative paper, craft paper with phenolic resin and imported fire-retardant agents that make up the support of the laminate.

Stylam Fire Retardant Laminates have been certified by Applus Laboratory, Spain. These laminates are available in 6 mm and above with industry best Euroclass B-s1, d0 fire classification. Stylam is the only manufacturer in India to launch fire retardant thin laminates as low as 0.8 mm with Euroclass C-s2,d0 fire classification.

BUILDING MATERIALS PRODUCT PORTFOLIO



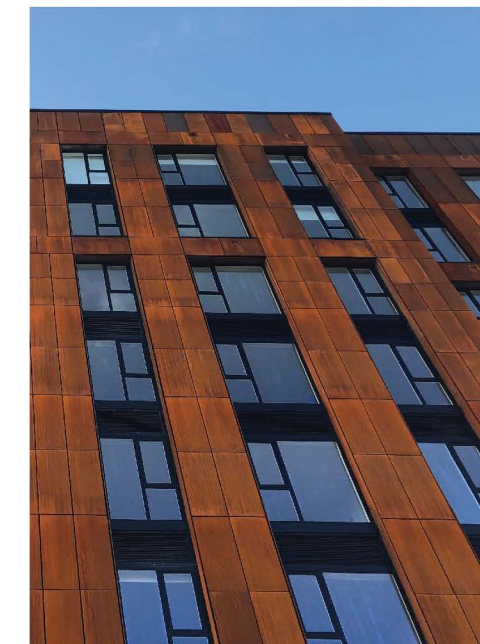
EXTERIOR CLADDING

FASCIA EXTERIOR CLADDING

Fascia, a lightweight and durable exterior facade material, offers innovative solution to all construction needs. These HPL compact laminate comes with an intrinsic surface manufactured using conventional PMMA based UV film or our USP KLEIBERIT Hot coating technology.

The blend of cellulose fibres and thermosetting resins, manufactured under high pressure and temperature yields a highly stable, dense panel with perfect strength to weight ratio. Available in wide range of colors, fascia is a perfect outdoor solution used in combination with other materials.

Conventionally, these exterior panels are engineered using PMMA based UV technology and blocks more than 99.8% of UV light to boosts UV protection performance.



STYLAM offers Fascia with its revolutionary Hot coating technology from KLEIBERIT, Germany. Hot Coating is a fully automated process, where coating of high quality PU + acrylic is carried out on decorative surface to achieve extremely durable, high scratch and abrasion wear resistance as compared to conventional process.



CUBICLES & LOCKERS



PRELAM BOARDS



Gloss Pro+, High gloss Pre laminated boards unique style, based on simplified shapes- is combined with innovative State-of-the-art machine with cutting edge German technology. This technology makes MDF high gloss boards suitable not only for modern homes but also for commercial projects and heavy traffic areas with a strong identity. Results in high abrasion resistance and durability to the pre-lam board surface thereby maintaining the gloss level three times sustained than ordinary gloss surface applications.



TouchMe Anti Fingerprint - offers super matt pre-laminated MDF boards that are more complete than ever – integrated, versatile and capable of diversifying, shaping the identity of indoor ambience. Anti-fingerprint surface with an ultra-soft touch and deep matt finish to absorb light and for harmonious interior spaces. Diverse patterns come up with a smooth feel softened by a matt surface, anti-fingerprint properties and toughness of MDF boards.



Stylam presents CUBOID - a modular restroom and locker cubicle system. The CUBOID range is crafted using the finest materials and highest quality fixtures and fittings especially for heavy traffic areas where functionality and durability matter the most. Our focus is on offering high-quality products that meet the specific demands of restroom applications in commercial, hospitality healthcare, education, transport, sports & wellness and leisure sectors.





ACRYLIC SOLID SURFACE

Granex[®]
100% ACRYLIC SOLID SURFACE

GRANEX is a high-quality composite solid surface material made of natural resins and polymers. This composition gives a unique warm quality, similar to natural stone. Resistance to all sorts of chemical and physical influences, this impermeable surface makes one of the first choices for interiors when hygiene and neat design matters the most.



Stylam is a proud **pioneer** manufacturing company **in India** for **ACRYLIC SOLID SURFACE**.

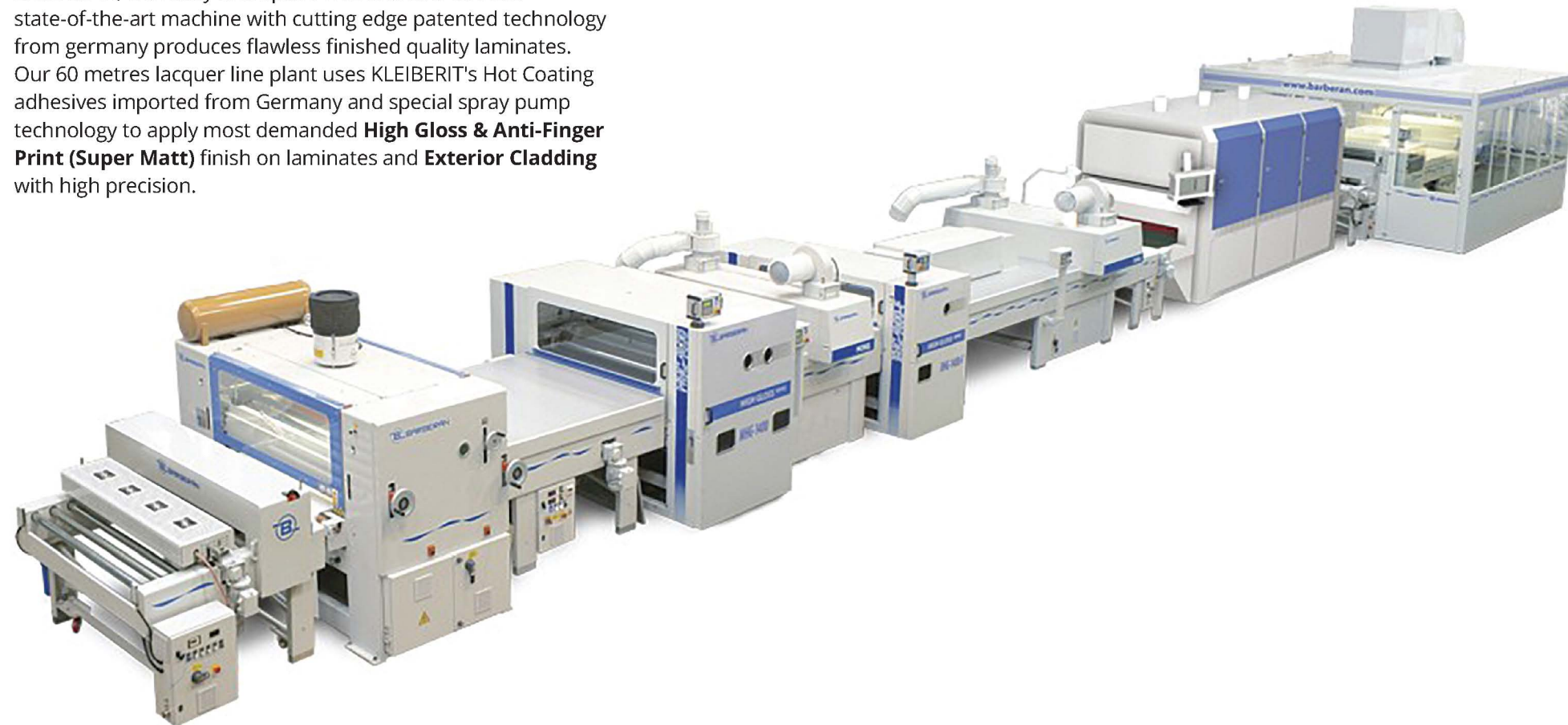


GRANEX -100% acrylic solid surface is a durable material that is composed of Alumina trihydrate, Acrylic MMA resin, and Pigments, while looks & feels like natural stone. Easy to fabricate and care for, solid-surface countertops are an excellent choice for many applications—more durable and attractive than most laminates and considerably less expensive than natural or composite stone.



Hot Coating Process. pioneers, and ahead.

Stylam is a pioneer in Hot Coating technology from KLEIBERIT and BARBERAN, Germany and Spain. This first ever in India state-of-the-art machine with cutting edge patented technology from germany produces flawless finished quality laminates. Our 60 metres lacquer line plant uses KLEIBERIT's Hot Coating adhesives imported from Germany and special spray pump technology to apply most demanded **High Gloss & Anti-Finger Print (Super Matt)** finish on laminates and **Exterior Cladding** with high precision.



Anti-fingerprint surface with an ultra-soft touch and deep matt finish to absorb light for harmonious interior spaces. Diverse patterns with a smooth feel softened by a matt surface, anti-fingerprint properties for projects that make a statement. Manufacture with State-Of-Art BARBERAN's machine + cutting edge German KLEIBERIT **Hot Coating** Technology which results in thermal healing capability and anti- microbial surface protection. Over a period of time, the laminates aren't going to look old from the outside or disintegrate from the inside.



Scratch-resistant shiny surfaces are not fiction anymore. Stylam is the first company in India to introduce revolutionary KLEIBERIT **Hot Coating** technology to produce High Gloss Laminates. We offer diverse creative patterns which anticipate market trends with styles and colours that will be combined with the most contemporary & avant-garde furnishings. The brilliance of gloss will be staying through years without any sign of wearing out! Stylam offers smart, innovative furnishing solutions to create flexible spaces for businesses and homes. PU + Lacquer coating technology leaves luminosity on the surface which lasts for years. It comes in a range of bright colours which uplift the aesthetics of your interiors. Laminates come with moisture and UV resistant. While scratches, dirt or other wear and tear show easily on its glossy surface, it is very easy to clean and maintain.





a turn.
towards
giving back.

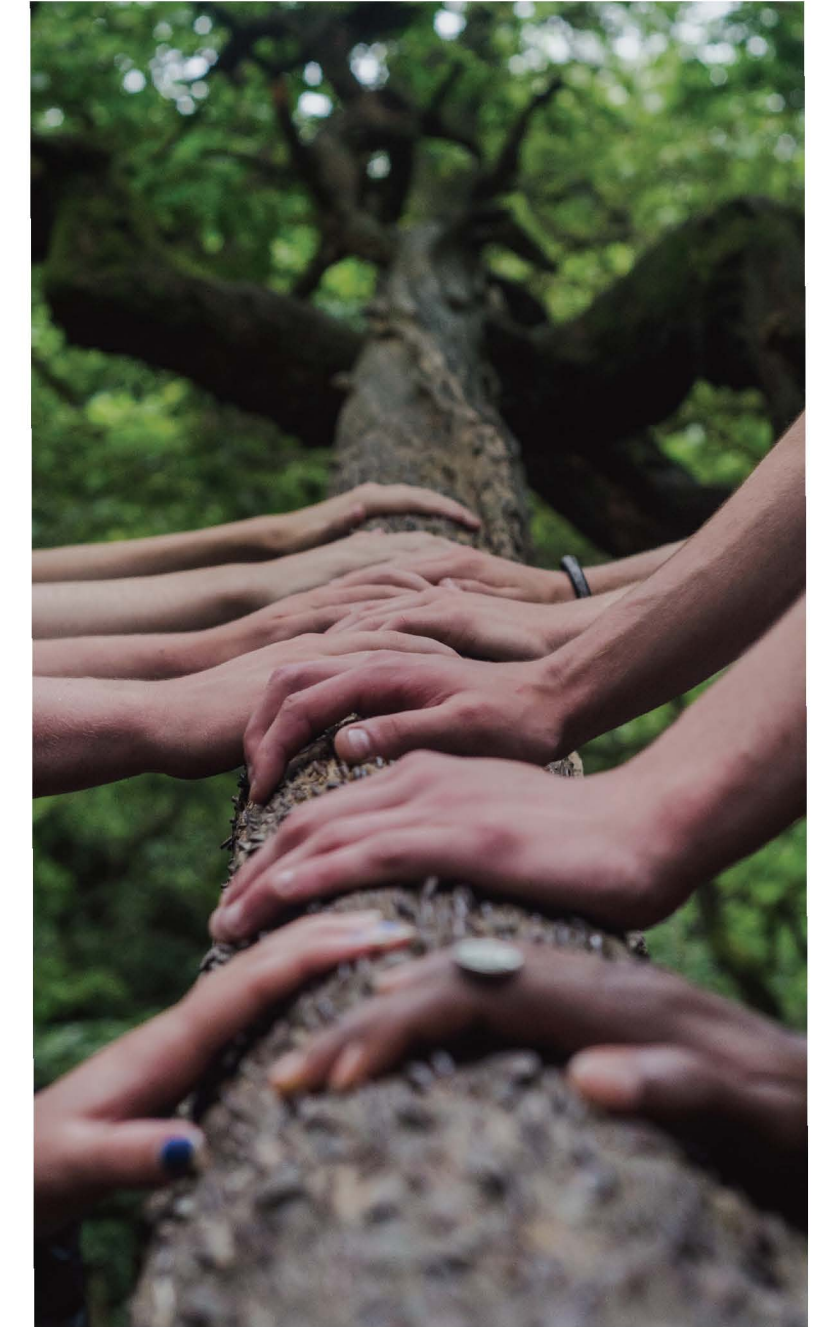


Environment

Stylam is committed to giving back to the environment. We are constantly looking for ideas and solutions to repair our planet through our conscious efforts. This is the reason, we have all our processes tuned towards guaranteeing the lowest possible impact on the environment.

Sustainability is at our heart. Our manufacturing practices are a testimony to that and we keep taking initiatives to make a difference. Stylam adheres to the standards put forward by the International Organization for Standardization (ISO). We aim to reduce our environmental footprint by adopting an effective Environmental Management System (EMS) ISO 14001:2015 ensures an environmental management system that we use to enhance our environmental performance.

Adding to that, IGBC ensures a holistic approach for Stylam to create environment-friendly buildings, architectural design, water efficiency, effective handling of waste, energy efficiency, sustainable buildings, and focus on occupant comfort & well-being.





care.
translated
into acts.

•• 27 STYLAM



Society

Stylam owes its success to its people who gave their all to make the company what it is today. We are an organization that believes in the power of people and in empowering people. This is the reason why we have undertaken a number of health and education initiatives.

We have been closely working with the Welfare Centre for Persons with Speech & Hearing Impairment, Rai Purani, Haryana. This is to help people overcome their hearing and speech challenges, and also provide the necessary equipment.

In the education sector, Stylam has been working with the Government Primary School, and Government High School of Village Manak Tabra, Haryana. We believe that a good environment in and around school creates a better learning atmosphere.



This is the reason, we have been proving the schools with furniture, paint, cooling fans, and swings for playgrounds. In this way, kids not only get good surrounding but also enjoy the process of learning.

Apart from the above, under the village adoption scheme, we have adopted Village Abheypur for the development objective. This initiative is to energise the rural economy in India and to slow down rural-urban migration. The idea is to keep adopting more villages and develop them.

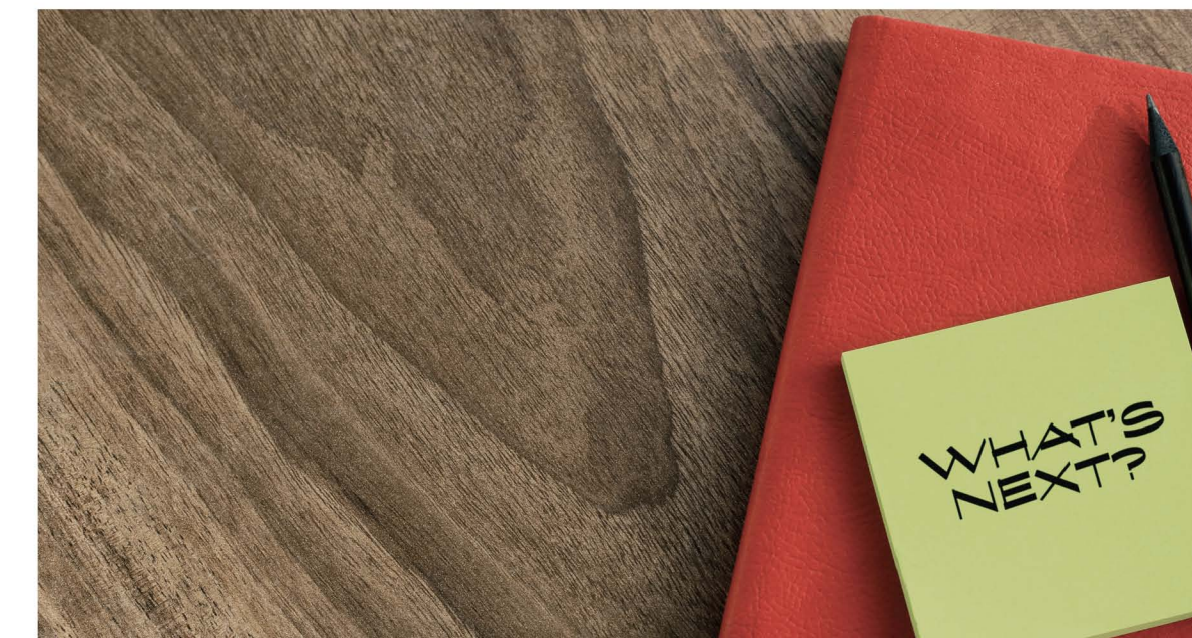
•• 28 CORPORATE PROFILE



around the
world.today
and tomorrow.

Global Presence

The dream of making home beautiful is universal. It is about people and their tastes and aspirations. Therefore, we never considered growth in terms of adding continents. But about reaching people in all corners of the world. We have stood true to our vision since inception, and today, we are thriving in export markets in more than **80+ countries**. Our major customers are in Europe, the Far East, the Middle East, Russia, Africa & North America and we continue to maintain robust YOY growth.



Future

Perfect Interior market changes like anything. Today it's retro, tomorrow it is abstract. People latch on to the in thing and ride on the wave of change, therefore changing the world around them. All we do, is match steps with them. We intend to give all our consumers, some fantastic interior solutions that are ahead of its time. We want to capture the imagination of people through our laminates and other products. In the years to come, we intend to change the way people design their homes. We also want to take personalization and customization to a whole new level.

An aerial photograph of a large industrial complex. The main building is a long, low structure with a corrugated metal roof. To its left is a smaller, multi-story office building. The facility is surrounded by a paved area with some parked trucks and a line of trees. In the background, there are more industrial structures and a hilly landscape. Red lines with dots point to specific areas of the facility, each labeled with a plant name.

LAMINATE
PLANT

HOT COATING
PLANT

SHORT CYCLE
PLANT

ACRYLIC SOLID SURFACE
PLANT

www.stylam.com

Specialty Laminates

Unicolor Laminates	Digital Laminates
Magnetic Laminates	Metallic Laminates
Synchro Laminates	Flicker Laminates
Chalk / Marker Boards	Mirror Shield Laminates



CELEBRATING



YEARS